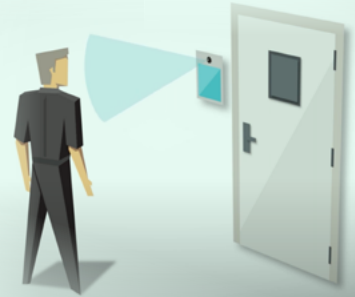




Protocol

TAKE CONTROL OF YOUR CONTROLLED ACCESS

Protocol is a revolutionary biosecurity management system that includes facial recognition for barn entry. Criteria such as downtime requirements, farm health status and previous visits are automatically managed to ensure your biosecurity protocols are always followed.



Know exactly who is entering your facilities

Protect against potential biosecurity risks in real time. Simplify how you manage biosecurity and control access automatically by facility, building, room, door and individual.

WHY USE PROTOCOL?



PREVENT UNAUTHORIZED ACCESS

Stop unauthorized people or those who do not meet your biosecurity protocols before they enter the barn



VERIFY ALL ENTRIES

More secure than RFID entry cards or even fingerprints or retinal scans, which lack behind the scenes biosecurity information



CONFIGURE TO YOUR NETWORK

Configure to your downtime, health status, flows and other biosecurity policies for your system



ADAPT TO ALL TYPES OF ENTRY

Use Protocol for roll-up doors and fumigation rooms, to ensure deliveries are biosecure



SPECIFIC TO BARN AND DOORS

Adjust within your system for each barn and each individual door



TIME TRACKING

Accurately record barn entry and exit times

How Protocol Works



Protocol uses facial recognition to allow owners/managers to know exactly who is entering their facilities. The barn manager sets up employee profiles in the system or sends a registration link to visitors.



Installed at key barn entrances, Protocol uses a facial template to authenticate the employee or visitor and either allow or deny entry based on biosecurity requirements.

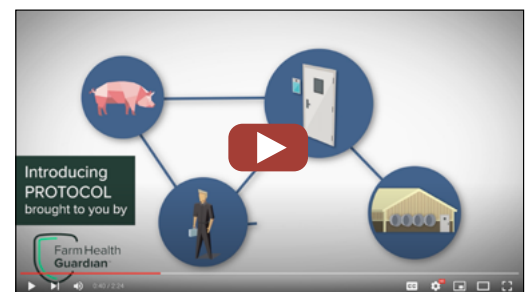


The technology checks against potential biosecurity breaches and, based on the visitor's history, downtime requirements and farm health status, determines if access should be granted.

BOOST YOUR BIOSECURITY

- ✔ Prevent disease spread with the most advanced biosecurity management software.
- ✔ Protect your farm, employees and bottom line.

Watch this [video](#) to learn more or contact us: info@farmhealthguardian.com



“Managing the movement of people and their access to facilities based on who they are, where they’ve been, disease status and other factors is key to any successful biosecurity program.”

– Thomas D. Parsons, VMD, PhD, University of Pennsylvania, School of Veterinary Medicine